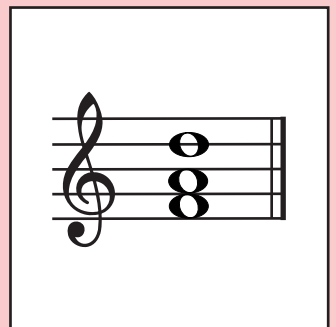
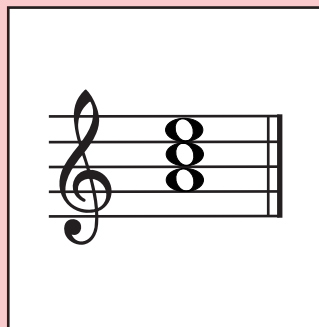
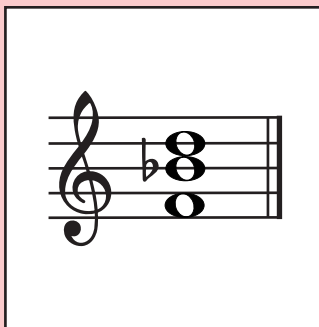


ROOT, ROOT, ROOT, 1ST, 2ND, 2ND

START



Easter Gnome Chords

Roll the Dice, Guess, And Win the Game

Players: 2

Activity time: 8 min.

Objectives: review and reinforce intervals

Objectives

To reinforce root and inversion chord recognition in the key signature of C Maj, A Min, F Maj, D Min, Bb Maj, G Min.

Preparation

1. Download and save a PDF file.
2. Print PDF.

Setting Up the Game

- 1 game board
- 1 mover for each player
- dice
- 1 pencil for each player

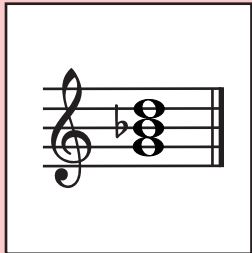
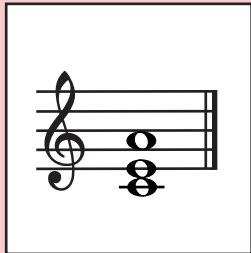
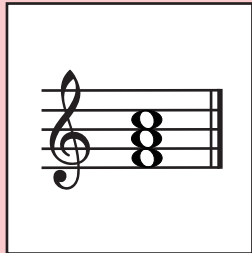
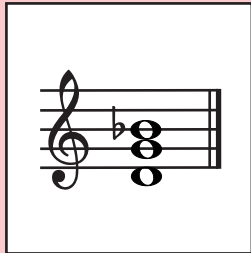
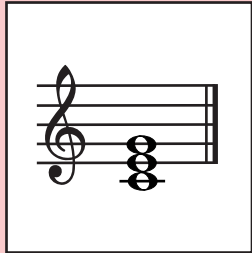
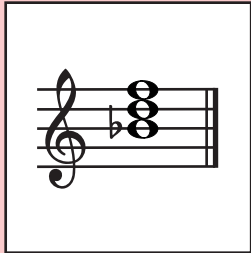
Instruction

The players take turns to roll the dice, move the marker to the matching square and guess the root or inversion. When answered correctly the student crosses out chord name from their chord name line, and if not remains on the same square and does not cross anything out. The turn goes to the next player.

Winning the Game

The first player to cross out all the chord names from their name line wins the game.

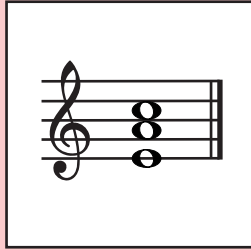
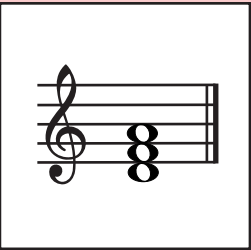
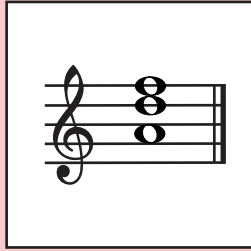
The digital content within this document is intended for use by the teachers of the private music studios. Resale of the digital content or any of its parts is not permitted. The written consent of the copyright owner is required for the reproduction and/or publishing of the content.



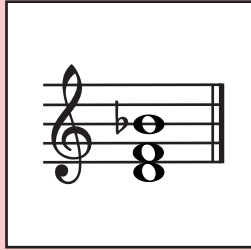
ROLL AGAIN



ROOT, ROOT, 1ST, 1ST, 2ND, 2ND



ROOT, ROOT, ROOT, 1ST, 2ND, 2ND



© 2021 Piano Heroes®

START

